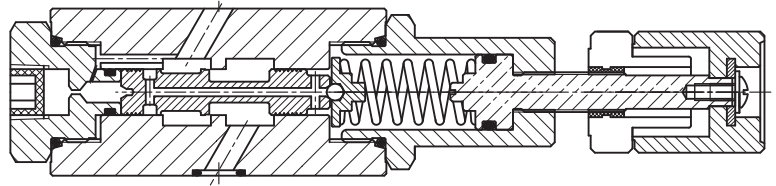


疊加式減壓閥

MODULAR PRESSURE REDUCING VALVE

MPR-02 系列 SERIES



基本規格 SPECIFICATIONS

MPR-02 系列 SERIES		
最大工作壓力 Maximum Pressure	bar	210 bar (3000 PSI)
最大壓力設定範圍 Maximum Pressure Setting	bar	35, 70, 140, 210 bar (500, 1000, 2000, 3000 PSI)
最大流量 Maximum Flow	LPM	35 LPM (9.25 GPM)
重量 Weight	Kgs	1.3 Kgs (2.9 Lbs)
使用油品 Fluid Type		礦物性 耐磨性 Mineral, Anti-Wear
黏度範圍 Viscosity	cST	10-400 cST (59-1854 SSU)
使用溫度 Operating Temperature	°C	-15-70°C (-5-158°F)
清潔度 Contamination Level		NAS 12 級以內 Under NAS Class 12
表面處理 Surface Treatment		磷酸鹽皮膜處理 Zinc Phosphate Compound

型號說明 HOW TO ORDER

MPR - 02 P - 2 - 30 - K - A

① ② ③ ④ ⑤ ⑥ ⑦

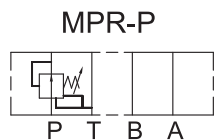
① 閥系列 Valve Series

MPR = 疊加式減壓閥
Modular Pressure Reducing Valve

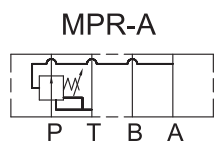
② 通稱口徑 Subplate Mounting Size

02 = 通稱 Nominal 1 / 4" (6mm)
ISO CETOP3
DIN NG6
NFFPA D03

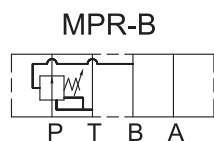
③ 控制迴路 Control Port



P 迴路控制
(P Port Only)



A 迴路控制
(A Port Only)



B 迴路控制
(B Port Only)

④ 壓力調整範圍 Adjustment Pressure

0 = 2 to 35 bar (28 to 500 PSI)
1 = 8 to 70 bar (115 to 1000 PSI)
2 = 35 to 140 bar (500 to 2000 PSI)
3 = 70 to 210 bar (1000 to 3000 PSI)

⑤ 設計型號 Design No.

⑥ 調整桿型式 Adjustment

省略 = 內六角調整 Omit = Hex. Screw With Nut
K = 旋鈕調整 Knob

⑦ 調整桿方向 Orientation

省略 = 標準; 調整桿在 B 側
Omit = Standard; B Orientation
A = 調整桿在 A 側
A = A Orientation

疊加式減壓閥
MODULAR PRESSURE REDUCING VALVE
 MPR-02 系列 SERIES

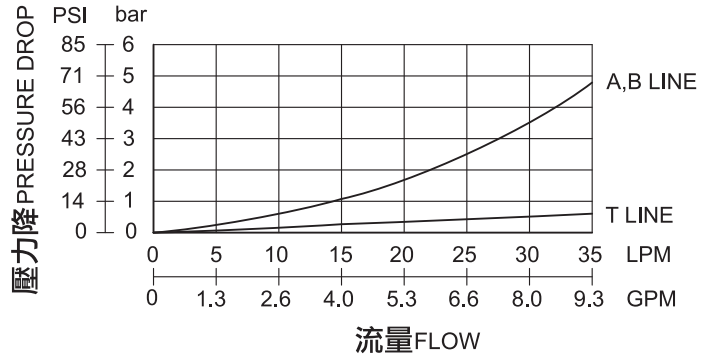
特性曲線 PERFORMANCE

測試條件 Test Conditions

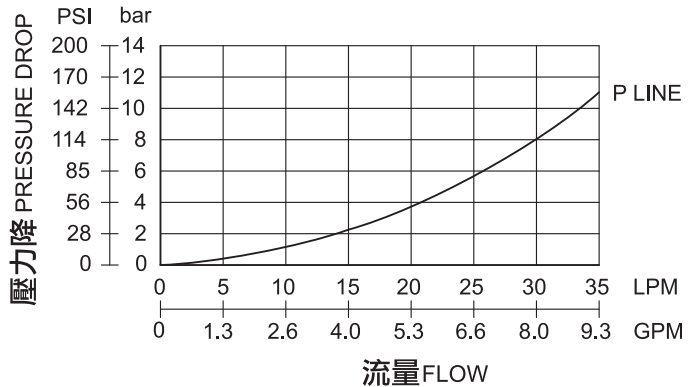
溫度 Oil Temperature: 50°C (122 °F)

黏度 Viscosity: 35cST (163 SSU)

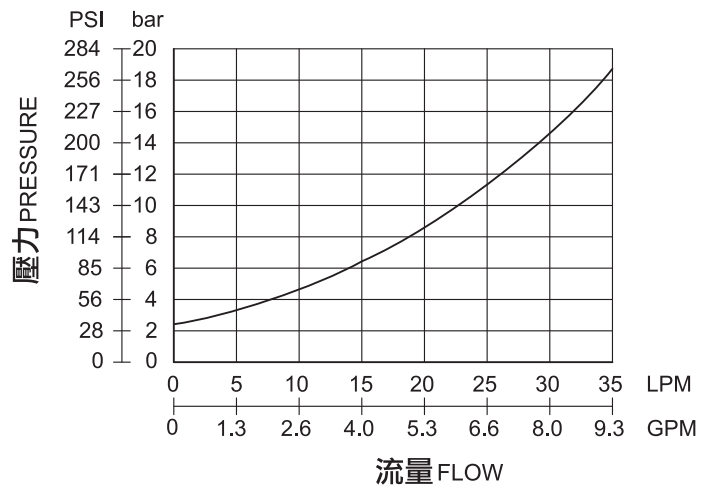
壓力降特性曲線 PRESSURE DROP



壓力降特性曲線 (滑柱全開) PRESSURE DROP (SPOOL FULLY OPEN)



最小調整壓力特性曲線 MINIMUM ADJUSTMENT PRESSURE



壓力設定

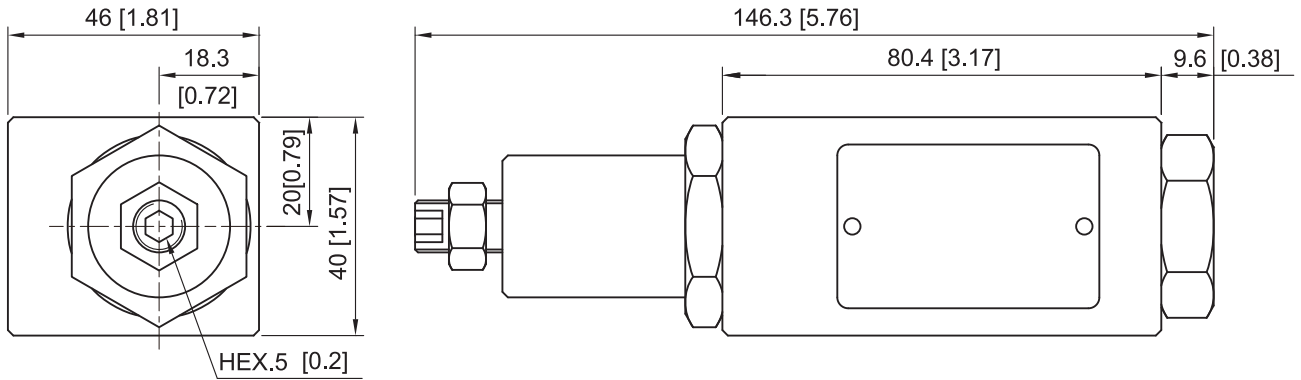
調整螺絲或把手順時針方向調整為壓力增加,逆時針方向調整為壓力減弱,
 壓力調整後請鎖緊六角螺帽或塑膠安裝螺帽

Pressure Setting

Facing to adjustment screw or knob, clockwise increasing pressure, counterclockwise decreasing pressure.
 Please tighten hex. nut or plastic setting nut after pressure adjusted.

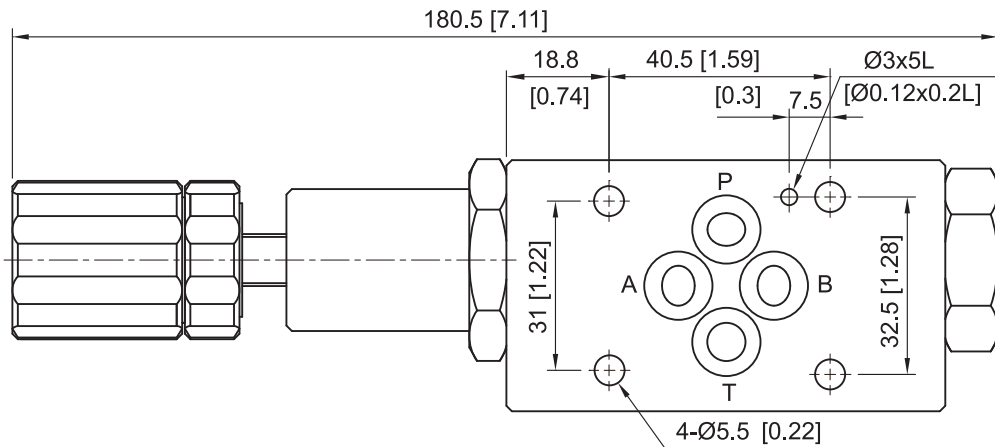
外型尺寸DIMENSIONS

MPR-02P/A/B-(A)

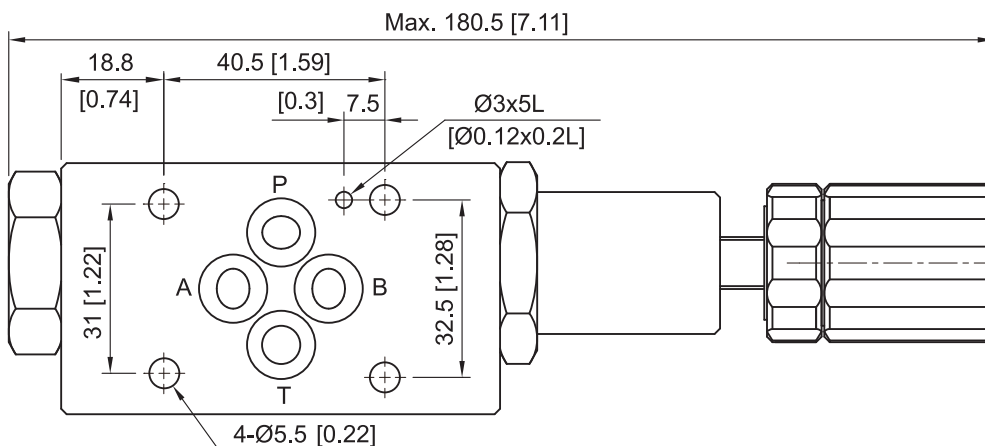
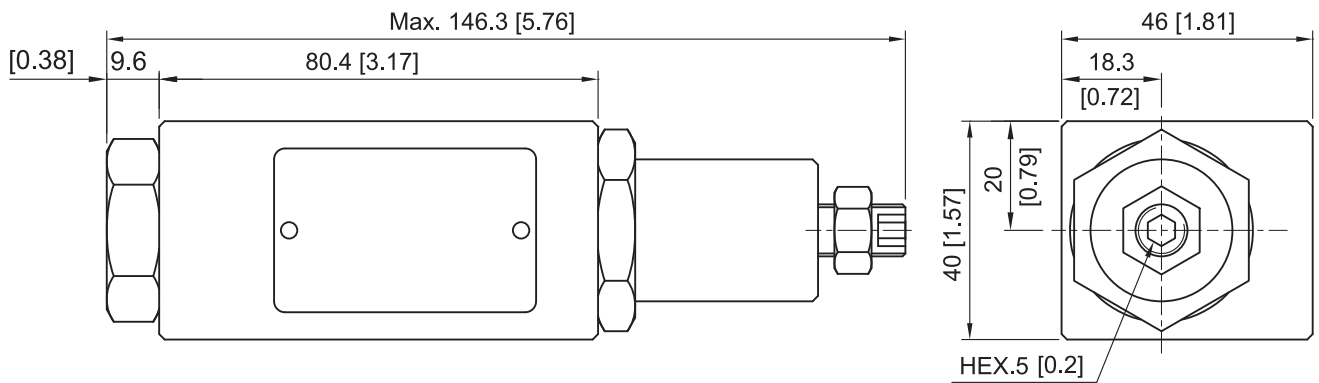


安裝面

Mounting Interface:
 ISO 4401-AB-03-4-A

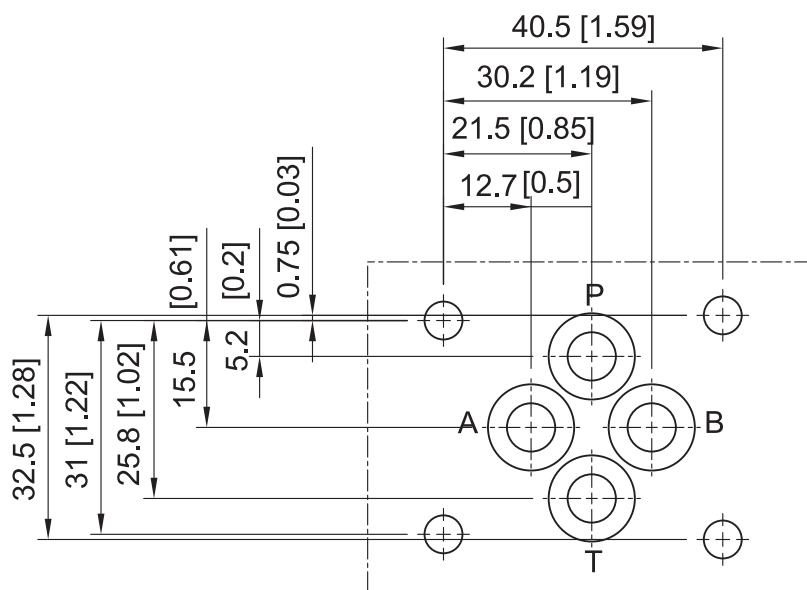


MPR-02P/A/B-(B)



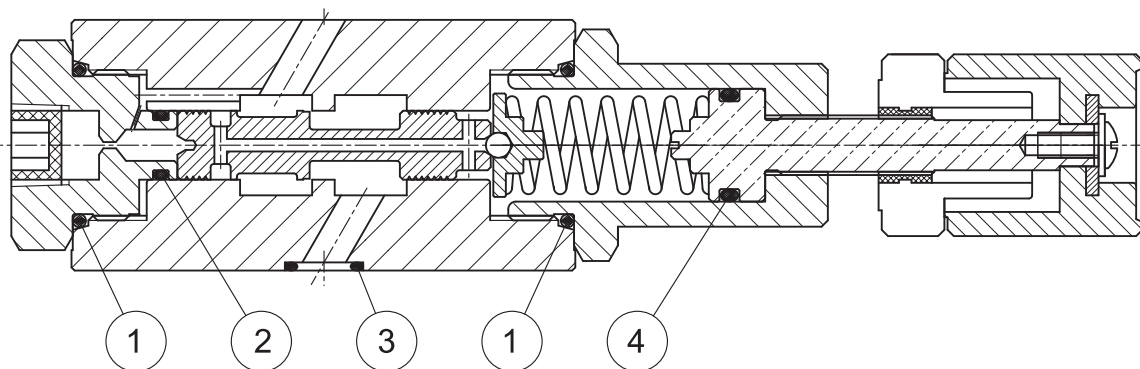
安裝面 MOUNTING INTERFACE

ISO 4401-AB-03-4-A



密封件 SEAL KITS

MPR-02

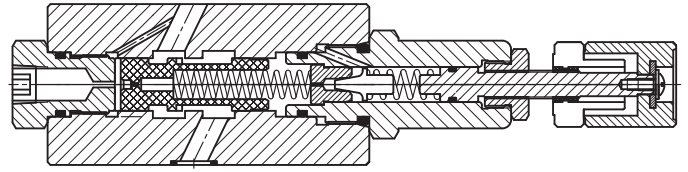


NO.	種類 Description	型號 Specification	數量 Q'ty
1	O 型環 O-ring	P-22 HS90°	2
2	O 型環 O-ring	P-8 HS70°	1
2	O 型環 O-ring	AS568-012 HS90°	4
3	O 型環 O-ring	P-14 HS70°	1

疊加式減壓閥

MODULAR PRESSURE REDUCING VALVE

MPR-03系列 SERIES



基本規格 SPECIFICATIONS

MPR-03 系列 SERIES		
最大工作壓力 Maximum Pressure	bar	210 bar (3000 PSI)
最大壓力設定範圍 Maximum Pressure Setting	bar	35, 70, 140, 210 bar (500, 1000, 2000, 3000 PSI)
最大流量 Maximum Flow	LPM	70 LPM (9.25 GPM)
重量 Weight	Kgs	3.4 Kgs (7.5 Lbs)
使用油品 Fluid Type		礦物性 耐磨性 Mineral, Anti-Wear
黏度範圍 Viscosity	cST	10-400 cST (59-1854 SSU)
使用溫度 Operating Temperature	°C	-15-70°C (-5-158°F)
清潔度 Contamination Level		NAS 12 級以內 Under NAS Class 12
表面處理 Surface Treatment		磷酸鹽皮膜處理 Zinc Phosphate Compound

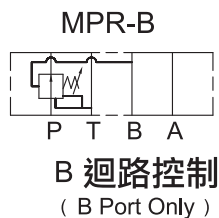
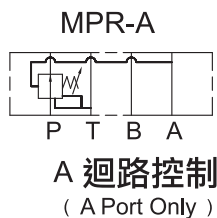
型號說明 HOW TO ORDER

MPR - 03 P - 2 - 30 - K - A

① ② ③ ④ ⑤ ⑥ ⑦

- ① 閥系列 Valve Series
MPR = 疊加式減壓閥
Modular Pressure Reducing Valve
- ② 通稱口徑 Subplate Mounting Size
03 = 通稱 Nominal 3 / 8" (9mm)
ISO CETOP5
DIN NG10
NFPA D05
- ③ 控制迴路 Control Port
MPR-P

P T B A
P 迴路控制
(P Port Only)
- ④ 壓力調整範圍 Adjustment Pressure
0 = 2 to 35 bar (28 to 500 PSI)
1 = 8 to 70 bar (115 to 1000 PSI)
2 = 35 to 140 bar (500 to 2000 PSI)
3 = 70 to 210 bar (1000 to 3000 PSI)
- ⑤ 設計型號 Design No.
- ⑥ 調整桿型式 Adjustment
省略 = 內六角調整 Omit = Hex. Screw With Nut
K = 旋鈕調整 Knob
- ⑦ 調整桿方向 Orientation
省略 = 標準; 調整桿在 B 側
Omit = Standard; B Orientation
A = 調整桿在 A 側
A = A Orientation

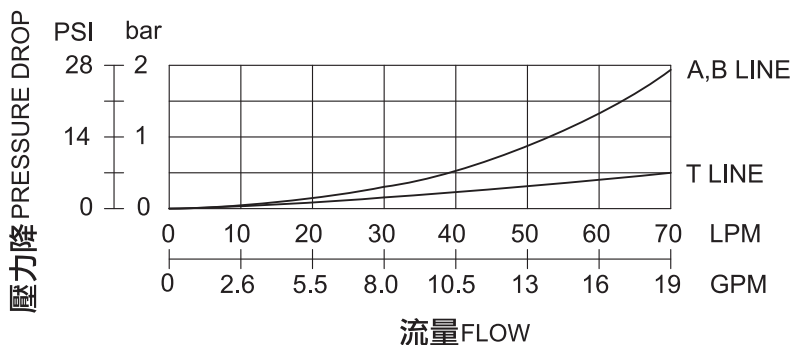


疊加式減壓閥
MODULAR PRESSURE REDUCING VALVE
 MPR-03 系列 SERIES

特性曲線 PERFORMANCE

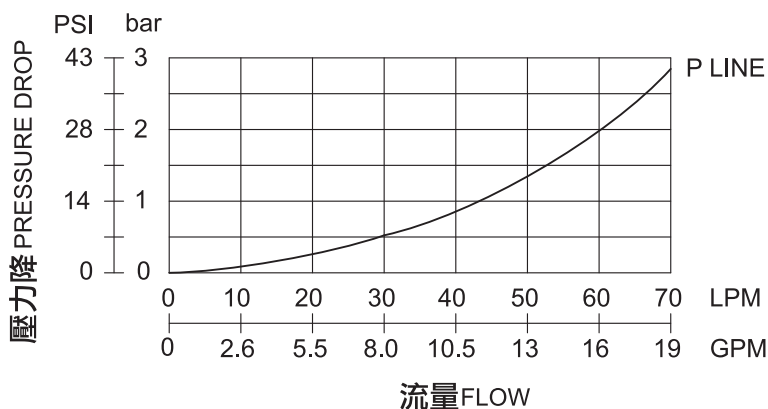
測試條件 Test Conditions
 溫度 Oil Temperature: 50°C (122 °F)
 黏度 Viscosity: 35cST(163 SSU)

壓力降特性曲線 PRESSURE DROP

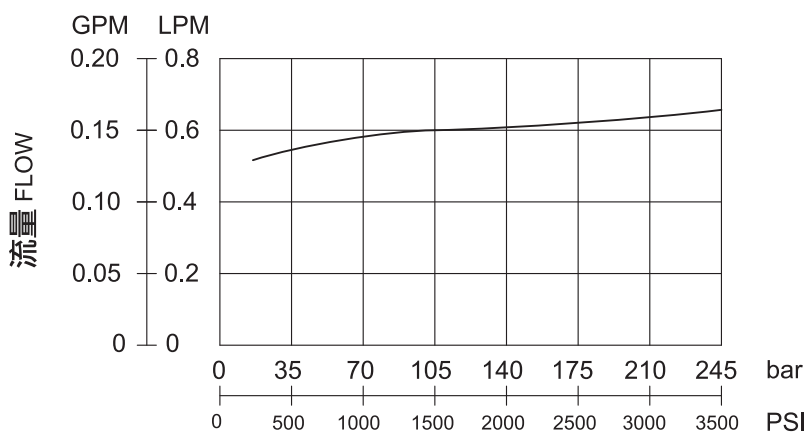


壓力降特性曲線

PRESSURE DROP (SPOOL FULLY OPEN)



先導流量特性 DRAIN CHARACTERISTIC



壓力設定

調整螺絲或把手順時針方向調整為壓力增加,逆時針方向調整為壓力減弱,
 壓力調整後請鎖緊六角螺帽或塑膠安裝螺帽

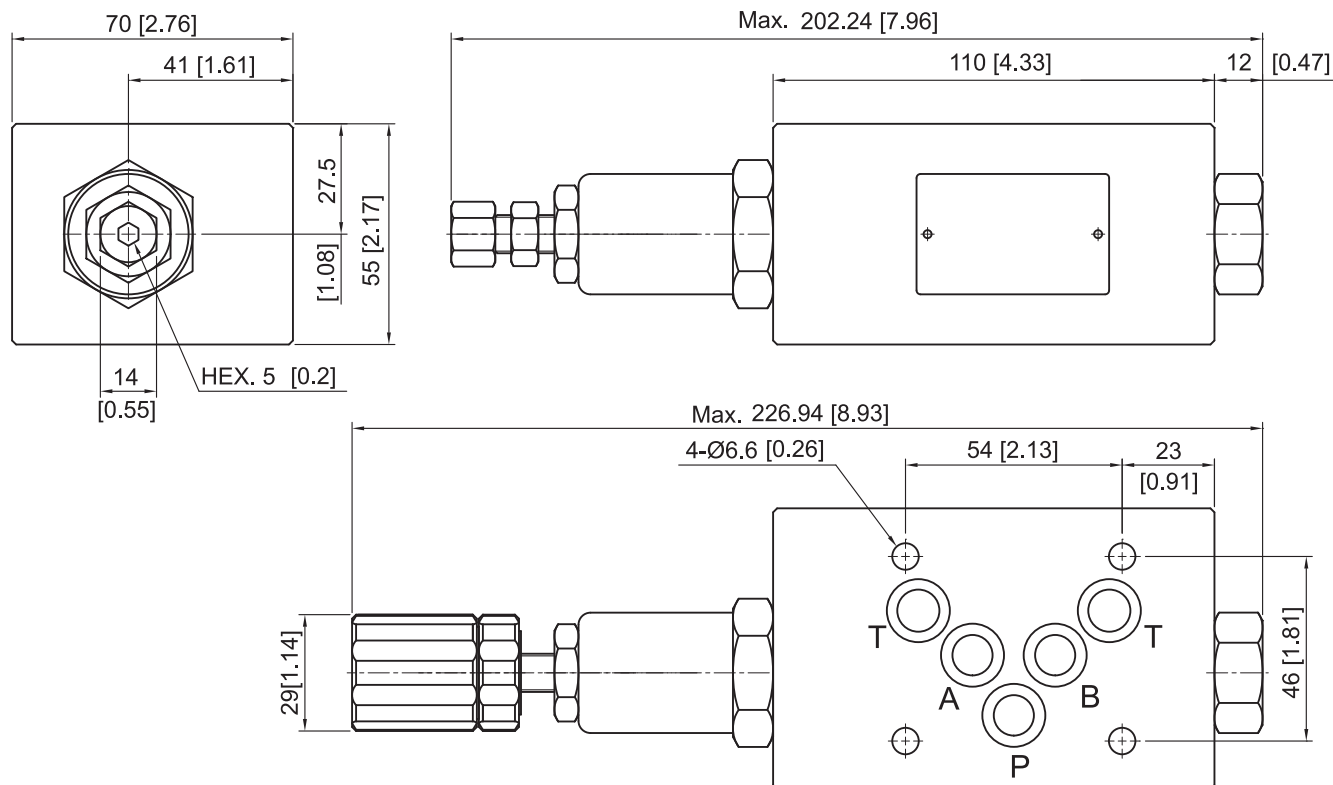
Pressure Setting

Facing to adjustment screw or knob, clockwise increasing pressure, counterclockwise decreasing pressure.
 Please tighten hex. nut or plastic setting nut after pressure adjusted.

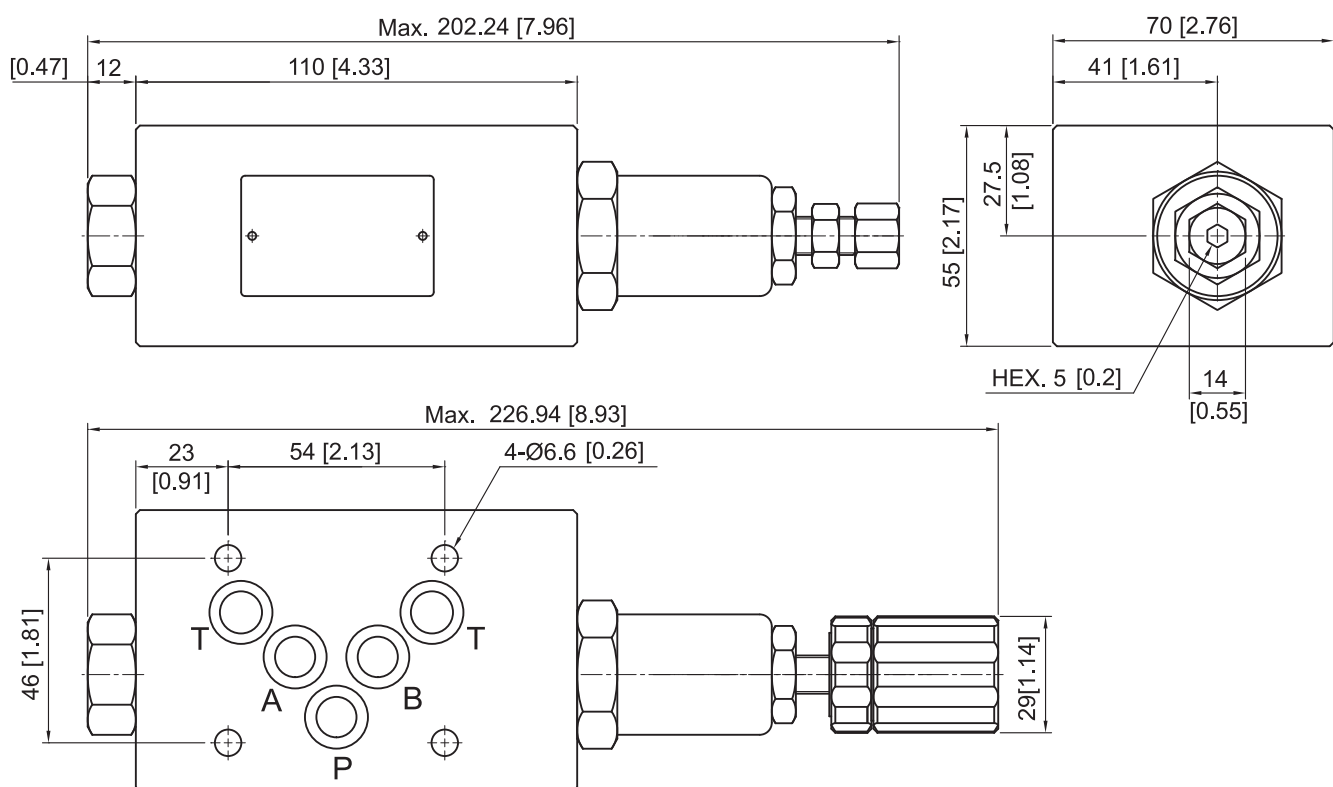
外型尺寸 DIMENSIONS

MPR-03P/A/B(A)

安裝面
 Mounting Interface:
 ISO 4401-AC-05-4-A

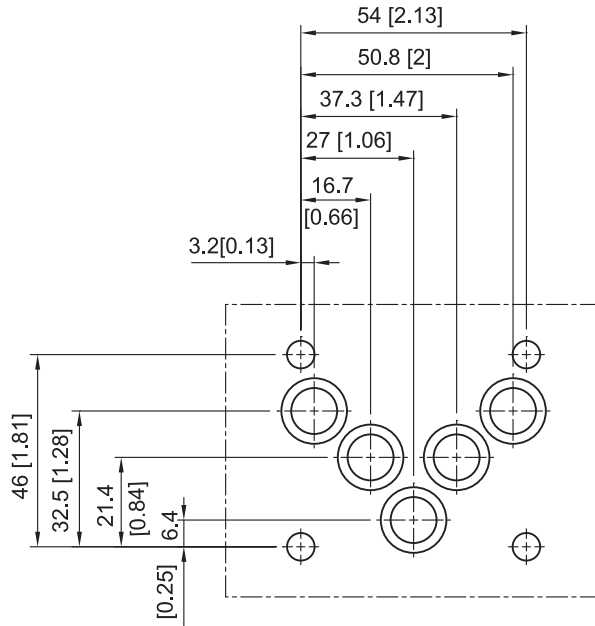


MPR-03P/A/B(B)



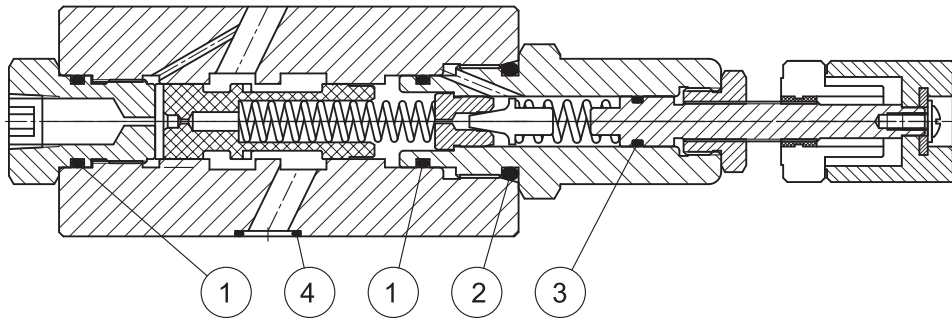
安裝面 MOUNTING INTERFACE

ISO 4401-AC-05-4-A



密封件 SEAL KITS

MPR-03



NO.	種類 Description	型號 Specification	數量 Q'ty
1	O 型環 O-ring	P-18 HS70°	2
2	O 型環 O-ring	P-22A HS70°	1
3	O 型環 O-ring	P-9 HS70°	1
4	O 型環 O-ring	AS568-014 HS90°	5